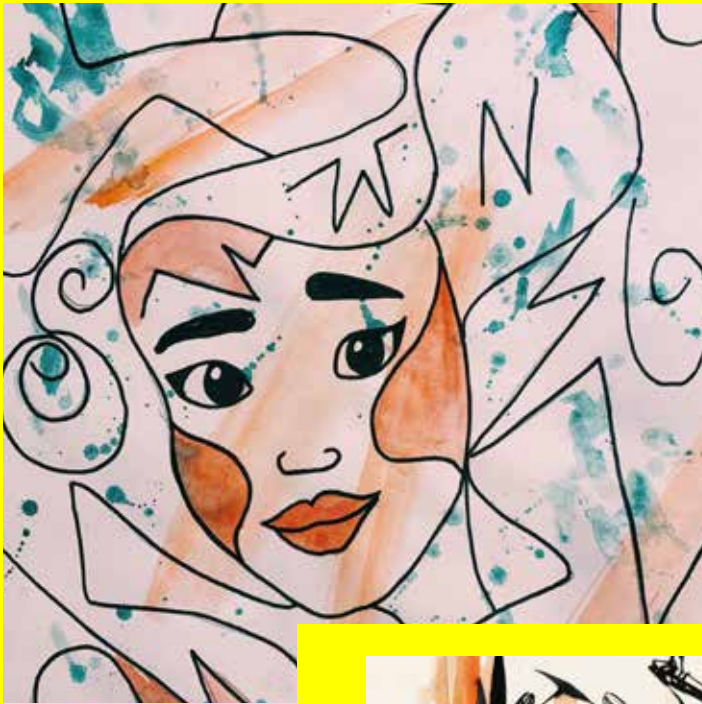


Root DIVISION

Expressive Portraits

Inspired by Mary Jhun Dandan

Created by Root Division Studio Artist
ChiChai Mateo



About Mary Jhun

- Filipina-American artist based in San Diego
- Used art as her “voice” when she migrated from the Philippines to the US as a child
- Work mainly features girls with improvisation of linework and expressive brush strokes





What you'll need:

- ❑ Paper
- ❑ Pencil with a black marker
OR a black crayon
- ❑ Watercolor + paintbrush
 - ❑ Other coloring tools work too!

Step 1



Draw a portrait in the middle of the paper
- include the face, head and neck

Could be a face of a person or an animal or a monster! Or even a plant :D

The goal is to start off with a subject

Step 2



Add lines to connect to your subject with pencil or black crayon. Fill up the page!



Notes:

Mary Jhun improvises her linework -- like Mary Jhun, be free! Think of how a straight line makes you feel vs. how a wavy or a zig-zag line does. What type of feelings do you want to convey?

Step 3



Let's splash on some color! Like with the linework, liberally add on brushstrokes (or coloring if not using paint).

Limit yourself to 2-3 colors. Mix up coloring inside the lines AND out!

Think of how different brush strokes make you feel.

What does a slow-and-steady brush stroke express for you?
What about a brisk brush stroke?
What about a splatter?



Notes:

Step 4

optional



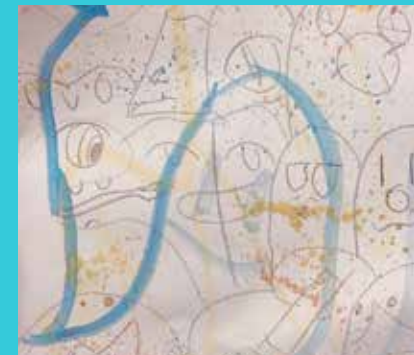
If you used a pencil, go ahead and outline your lines with marker once the paint is dry.

Step 5



Admire your artwork!

**Examples from
our students at
Galing Bata**



Find more creative content here:

rootdivision.org/page/digital-experiences